

# TURQUESA Homes

## Home n°11



PRIVATE PLOT 413m<sup>2</sup>

TOTAL CONSTRUCTED AREA\* 229,68m<sup>2</sup>

TOTAL USABLE AREA\* 163,43m<sup>2</sup>

(\* ) Optional basement included



URBANIZATION

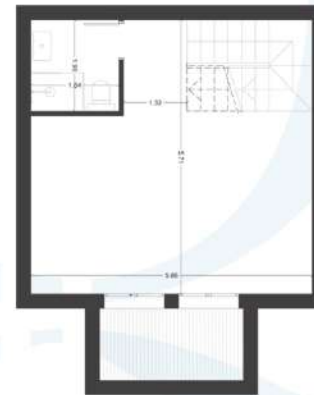
ENTRANCE FLOOR



FIRST FLOOR



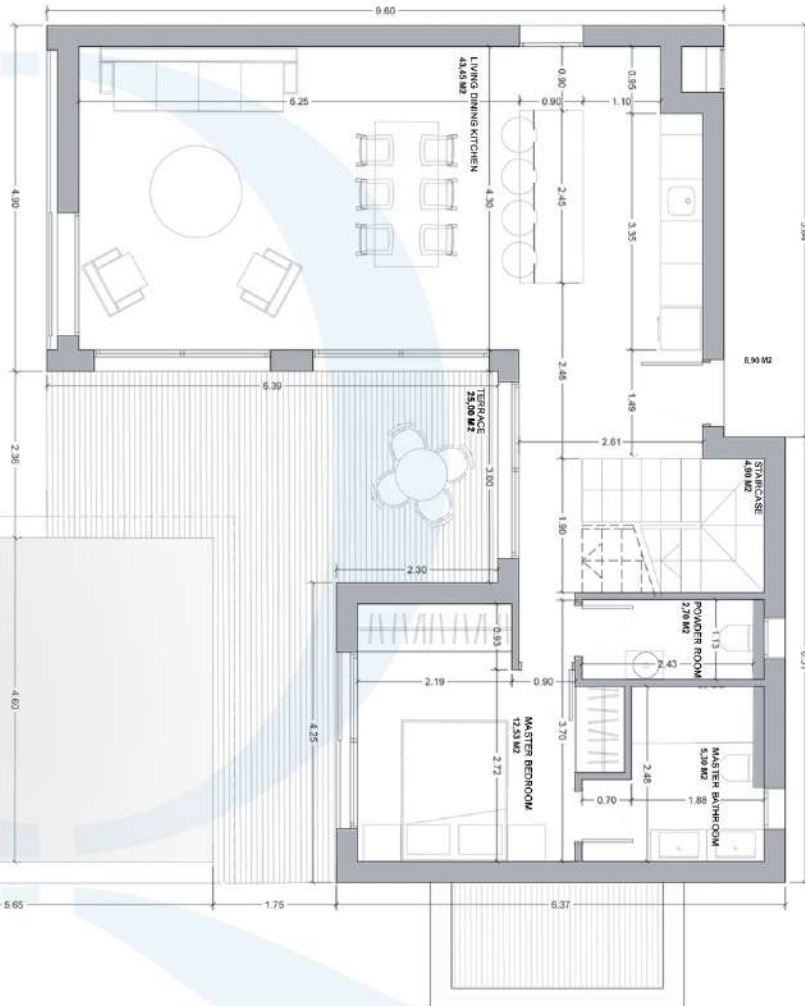
OPTIONAL BASEMENT



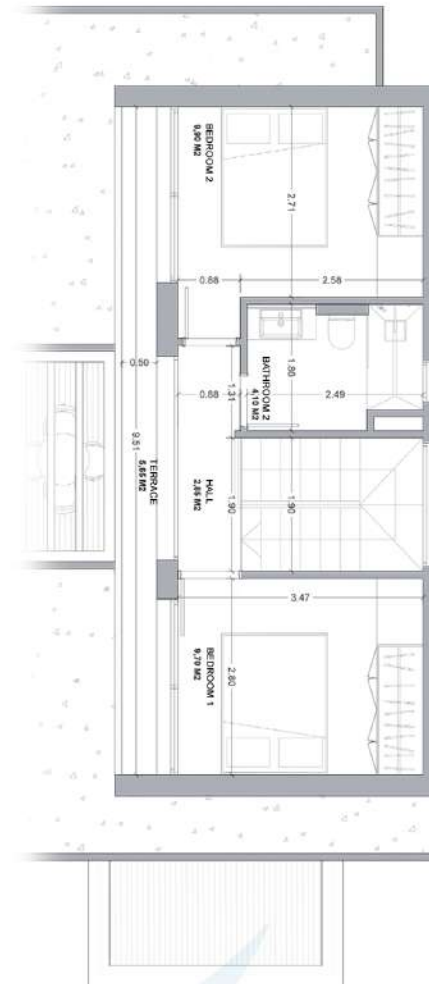
## Home n°11



### ENTRANCE FLOOR



### FIRST FLOOR



**PRIVATE PLOT** 413m<sup>2</sup>

**CONSTRUCTED AREA\*** 229,68m<sup>2</sup>

**ENTRANCE FLOOR** 85,92m<sup>2</sup>

**FIRST FLOOR** 39,50m<sup>2</sup>

**TERRACE ENTRANCE FLOOR** 25,00m<sup>2</sup>

**TERRACE FIRST FLOOR** 6,00m<sup>2</sup>

**POOL AREA** 26,00m<sup>2</sup>

**OPTIONAL BASEMENT** 47,26m<sup>2</sup>

**USABLE AREA\*** 163,43m<sup>2</sup>

**ENTRANCE FLOOR** 88,98m<sup>2</sup>

**LIVING DINING KITCHEN** 43,45m<sup>2</sup>

**POWDER ROOM** 2,70m<sup>2</sup>

**MASTER BEDROOM** 12,53m<sup>2</sup>

**MASTER BATHROOM** 5,30m<sup>2</sup>

**TERRACE** 25,00m<sup>2</sup>

**FIRST FLOOR** 36,90m<sup>2</sup>

**STAIRCASE** 4,90m<sup>2</sup>

**CORRIDOR** 2,65m<sup>2</sup>

**BEDROOM 2** 9,70m<sup>2</sup>

**BEDROOM 3** 9,90m<sup>2</sup>

**BATHROOM 2** 4,10m<sup>2</sup>

**TERRACE** 5,65m<sup>2</sup>

**OPTIONAL BASEMENT FLOOR** 37,55m<sup>2</sup>

**DIAFANOUS ROOM** 24,65m<sup>2</sup>

**BATHROOM** 3,50m<sup>2</sup>

**STAIRCASE** 4,90m<sup>2</sup>

**ENGLISH PATIO** 4,50m<sup>2</sup>

(\*) Optional basement included

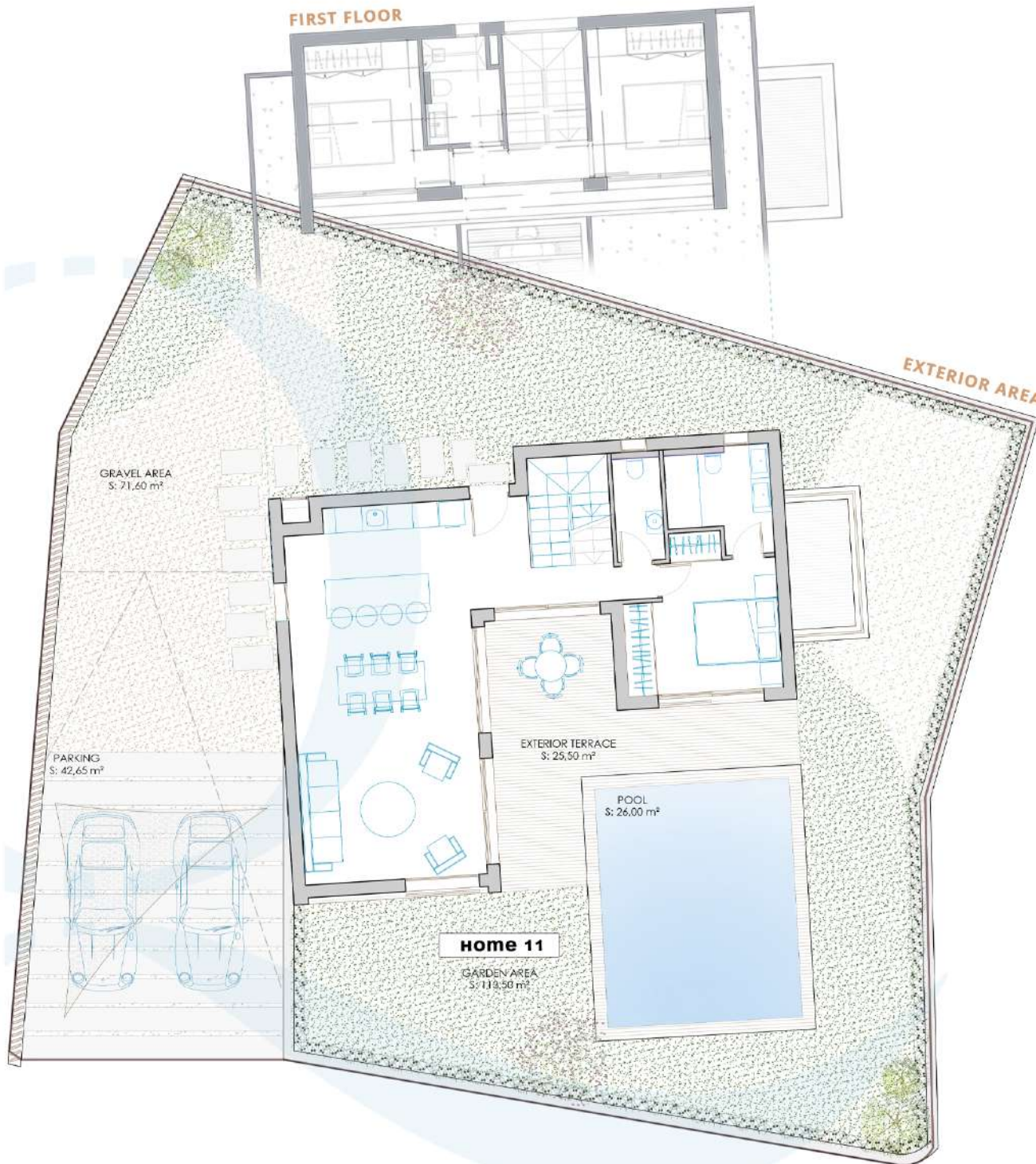
## Home nº11



PRIVATE PLOT 413m<sup>2</sup>

USABLE AREA EXTERIOR 279,25m<sup>2</sup>

POOL	26,00m <sup>2</sup>
GARDEN AREA	113,50m <sup>2</sup>
GRAVEL AREA	71,60m <sup>2</sup>
PAVED AREA	25,50m <sup>2</sup>
PARKING	42,65m <sup>2</sup>



We care for  
the world by  
caring for  
your world